



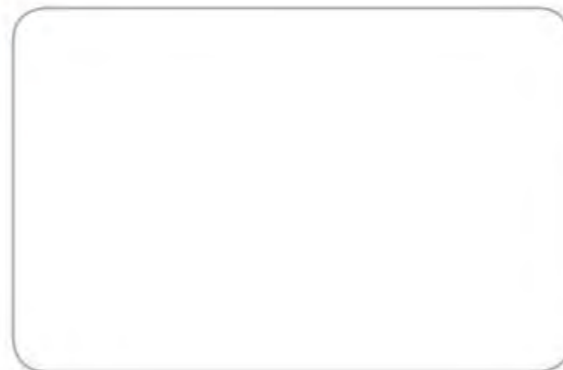
design, quality & technology

design, quality, technology



Golmar Sistemas de Comunicación, S.A.
Silici, 13
Polígono Industrial Farnades
08940 Cornellà de Llobregat
(Barcelona - Spain)
Tel.: +34 934 800 696
Fax: +34 934 742 404

export@golmar.es
www.golmar.es



D.L.: B-13566-2011



INNOVATIVE door entry systems



company & history

The endorsement of a history

Golmar's history has been characterized by a clear and decided spirit of excellence.

Golmar Sistemas de Comunicación S.A. was set up in 1954. The first door intercom was developed in 1958, followed some years later by the video door intercom, which is nowadays the most important product.

Exports has been a main activity of the company since 1968. Currently, it accounts for more than 45% of production and has extended to over 45 countries, particularly to the demanding European Community members.

In 1994, the company was the first in Spain to develop a digital video intercom system, being a clear example of innovative products. A key factor for success is the ability to develop new products and adapt them to each market's specific requirements.

During the last quarter of 1997, it moved to its current premises located in a modern, 6,500 m² building, minutes away from Barcelona Airport as well to downtown.

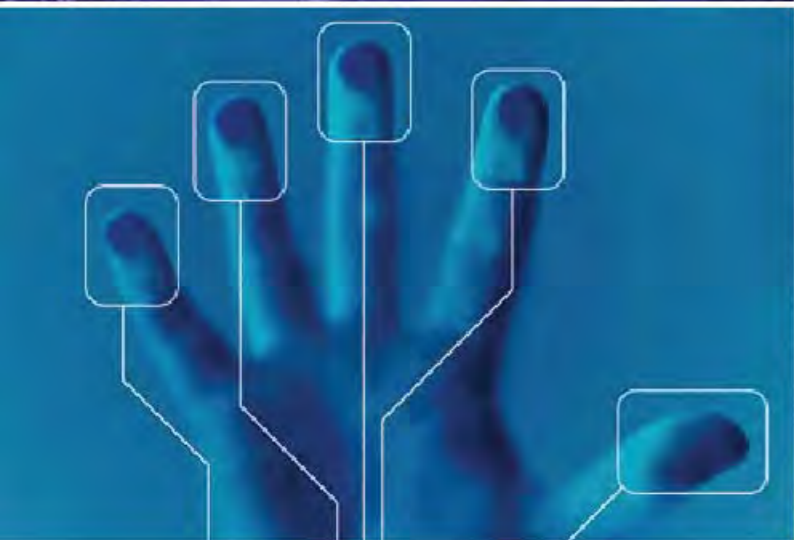
Golmar was the first Spanish company in the field to obtain the ISO 9000:2000 Certification, granted by the prestigious Swiss company SGS since 2001.

In 2004, it celebrated its 50th anniversary and created subsidiaries in some European countries.

The company currently employs 130 people, where the Innovation Department approximately represents 10% of the total staff.

All in all, Golmar has embarked on an ambitious project, so as to become one of the main European manufacturers of the video door intercom field.





know-how know-how know-how



We have the formula

Golmar has always spearhead by offering innovative systems and products with high aesthetic standards, with the focus to communicate and to protect.

Taking advantage of being a pioneer in the development of digital communications systems, Golmar applies advanced technologies into their systems. Installers and end users enjoy the countless features that these systems offer.

The following technologies are available on Golmar's product range:

IP « IPlus » Full IP digital system, allows connection of door entry panels and video monitors by using a new or an existing LAN infrastructure. The LAN can be shared with other IP devices. The monitors and panels are connected with a simple RJ-45 connector coming from a PoE switch. Intercom between apartments, memory image and message broadcast service are some of the multiple features of this new intercom generation. Never was the intercom so powerful and easy to install!

Our most selling digital BUS: **"PLUS"**, uses 3 wires + coaxial cable or 4 wires + twisted pair (CAT5) for video systems, or 4 wires for audio only systems. This system is able to manage up to 255,000 monitors or telephones distributed in a total of 255 buildings, being unlimited the number of accesses to each building. And, as always, without switching units.

"V2PLUS" digital video system and **"2PLUS"** audio BUS use 2 non polarized wires only, being possible to connect 120 monitors or telephones and combinations of up to 3 accesses (door panels) without switching units. Other configurations can be drafted when combining "V2Plus" and "2Plus" systems with "Plus" system.

"VISTA PLUS" video BUS allows the replacement of existing 4+n audio systems, without the need to change or add wires, being possible to connect 120 monitors or telephones and combinations of up to 6 accesses (door panels) without switching units. Other configurations can be drafted when combining "Vista Plus" system with "Plus" systems.

Traditional 4+n analogue audio systems,

Don't take any risks, benefit from the best solution for your installations; nobody knows better than Golmar about digital systems.



Stadio door entry panels

Stadio door entry panels

- Front of 1.8mm. thick aluminium.
- Self-screwing system for modules attachment.
- More than 30 module references.
- Door panel opening system at selectable direction.
- Adjustable pan and tilt camera on video modules.
- Interchangeable single or double push buttons with stainless steel cover.
- Easily seen light button.
- Closing heads.
- On panels with coded keypad:
Illuminated stainless steel buttons.
- Large 2 x 16 bias lighted LCD display.

Characteristics

STADIO



A world of possibilities

The elegance of the aluminium, a lightly curved front and an emerging grille show our efforts to apply the ultimate concept lines to our designs.

The original assembly system, its material properties and an accurate manufacturing progress, ensures bond strength between the door panel modules and a high constructive quality.

The size of the door panel is no longer a problem: reach the maximum number of push buttons with the smallest door panel.



Rock Inox stainless steel panels

stainless steel
rock inox stainless steel

- Front of 2.5mm. thick manufactured in ANSI 316 stainless steel.
- Treatment to avoid fingerprint spots.
- 5mm. thick polycarbonate card holding and camera windows.
- Adjustable pan and tilt camera on video modules.
- Double walled sound grill that prevents access to the sound circuit.
- From 1 to 20 stainless steel push buttons.
- Permanent illumination through blue leds.
- On panels with coded keypad:
 - Stainless steel keypad with blue illumination.
 - Large 2 x 16 bias lighted LCD display.
- Security screws with special key.
- Metallic embedding box with theft protected stoppers.

Characteristics

ROCK



Suitable for any environment

The thickness of the materials used, the exclusive treatment to avoid fingerprints spots, the permanent illumination in blue colour makes this panel the ideal option for the most distinguished homes and buildings.

Additional features such as proximity or contact readers can be combined with any of the formats. Panels are also available with rainshield or surface mounting box.



Casing manufactured in polished ABS black colour.
 Removable front cover delivered in black and white colours from factory.
 Aluminium, dark gold and anthracite fronts can be separately ordered.
 Blue backlit soft keypad.
 3.5" TFT LCD of "A Grade" quality.
 Programming and setting through OSD menu.
 Surface installation of 35mm depth only, or embedded installation,
 with a visible depth of 11mm only.
 Dimensions: 97(W) x 207(H) mm.

Characteristics

hands free monitor

hands free monitor

Customisable design, functional technology

Szena is the latest generation hands free monitor, where the attention to detail makes all the difference. Dynamic, technologically advanced and simple, thanks to its "on screen menu" and clear communication never has it been so simple to use a video monitor.

Szena is an interesting exercise in personalization. The ability to install embedded or on the surface and its removable front covers allows a perfect integration with any interior design.

Szena is a unique monitor. Details such as backlit push buttons, metallic colours, reduced dimensions and a minimalist cutting-edge design, define the Szena monitor as the monitor of choice.



SZENA



Platea



Casing manufactured in polished ABS RAL 9003 white colour.
 Additional push button and on-off call volume regulator in option.
 Detachable telephone cord with connectors.
 Telephone base with several fixing points.
 Dimensions: 88(W) x 235(H) mm.

apartment units



Characteristics

Casing manufactured in ABS RAL 9003 white colour.
 4" b/w flat tube screen or 3.5" color TFT LCD of "A Grade" quality.
 Brightness and contrast (color) adjustments.
 Additional push buttons and on-off call volume regulator in option.
 Detachable telephone cord with connectors.
 Surface installation through wall mounting connector.
 Dimensions: 200(W) x 220(H) mm.



Self identity monitors

On Platea monitor we have given line to the imagination with a design completely developed by our internal team. The Mediterranean nature of the design, formal but gentle, along with the outstanding features, will grant it success on the world intercom market. One of the most remarkable characteristics of the Platea monitor is the possibility to personalize the front plate colour.

Tekna monitor is the best new monitor of Golmar. The symmetry of its lines and the avant-garde design will set a path on the decoration of any atmosphere. A touch of distinction.